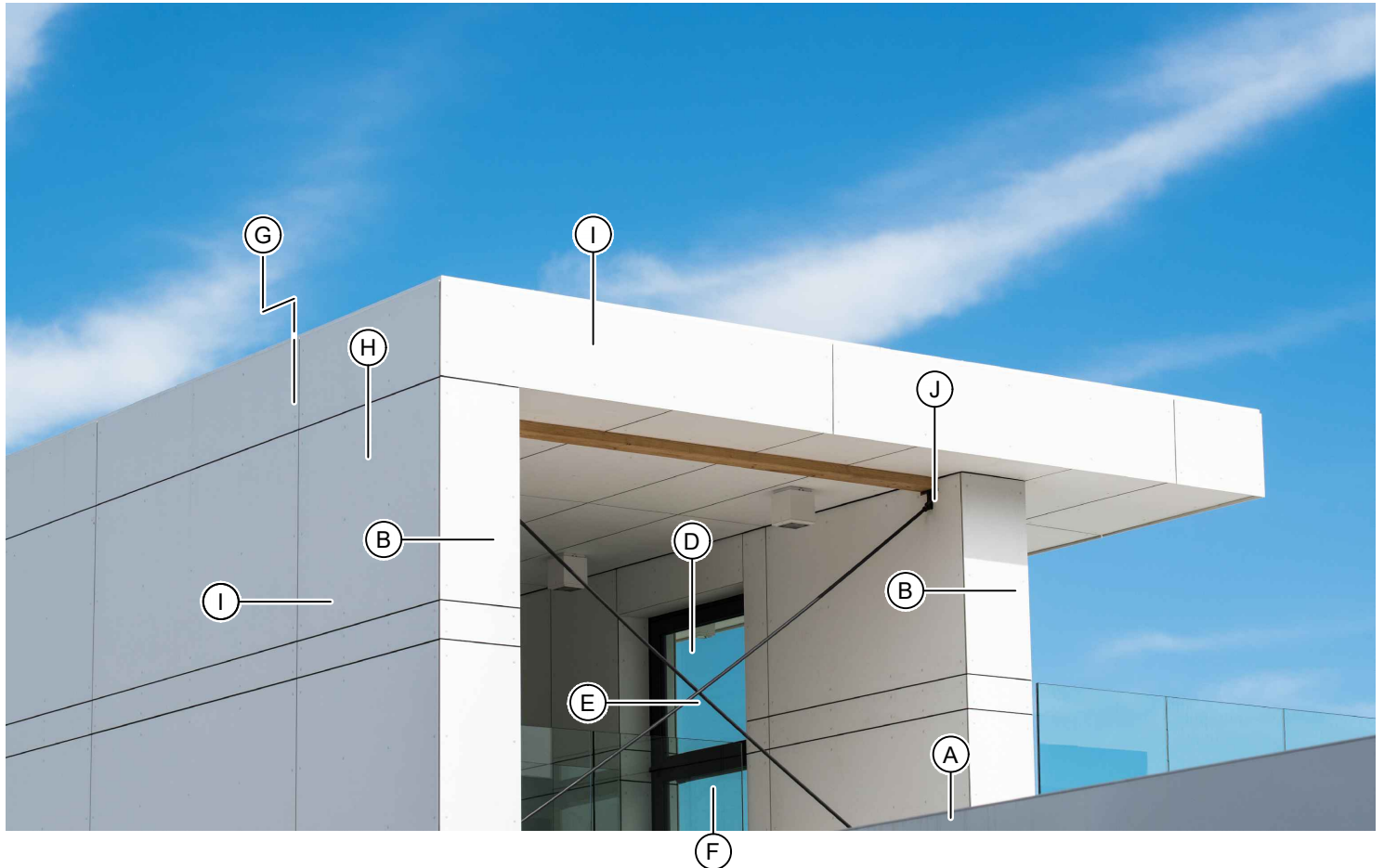
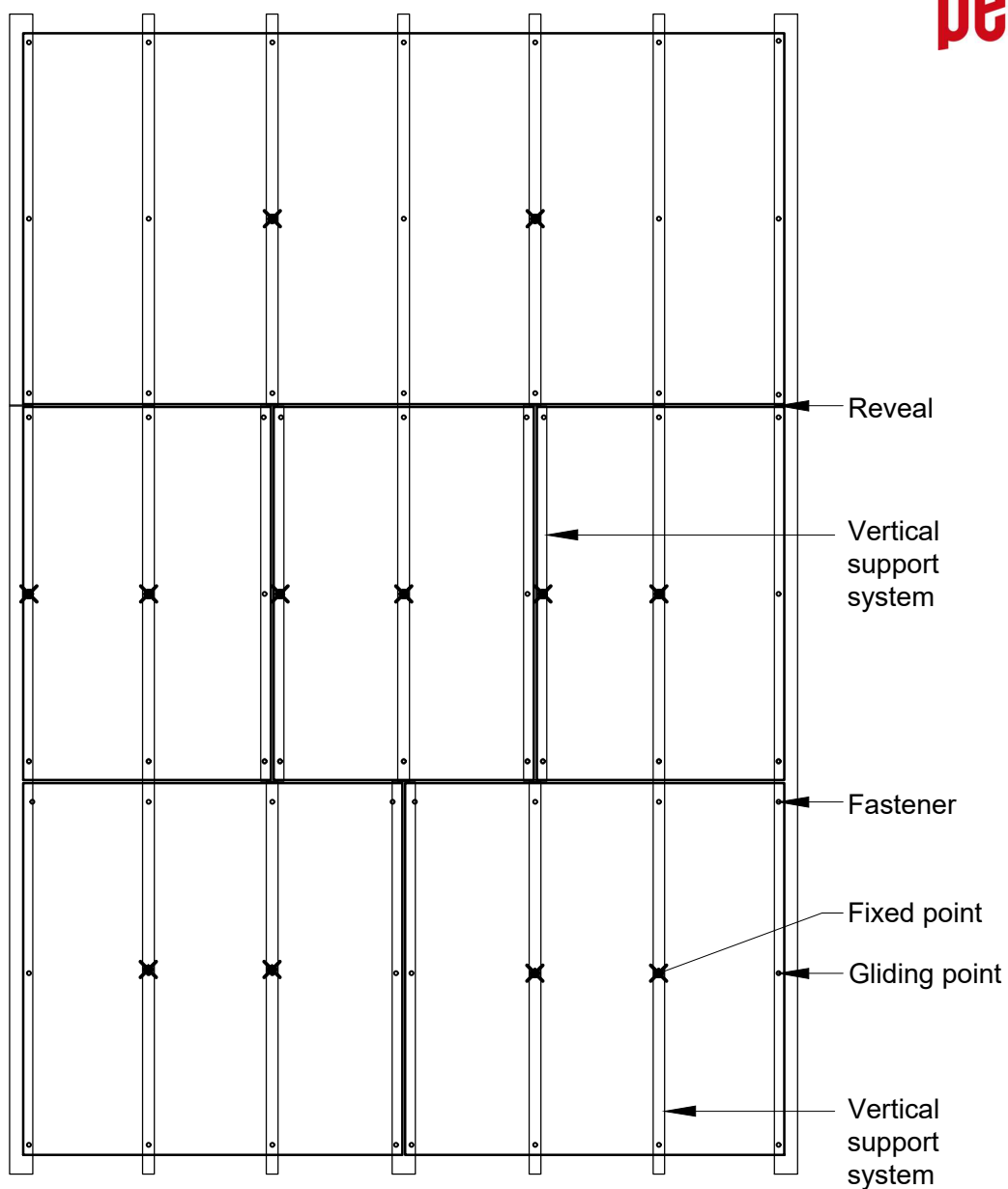


Swisspearl standard panel wall attachment installation detail guide



- | | | |
|------------------------|----------------------------|--------------------------|
| (A) Base | (E) Door / Window Jamb | (I) Field Vertical Joint |
| (B) Outer Corner | (F) Window Sill | (J) Soffit Edge |
| (C) Inside Corner | (G) Parapet / Coping | |
| (D) Door / Window Head | (H) Field Horizontal Joint | |

Wall panel standard layout



Ventilation requirements - The minimum panel joints between panels is 5/16" . The minimum air space required is 3/4" behind all panels.

Vertical Profiles - The maximum height of aluminum profile is 3 meters / 118" long and with steel is 6 meters / 236" long.

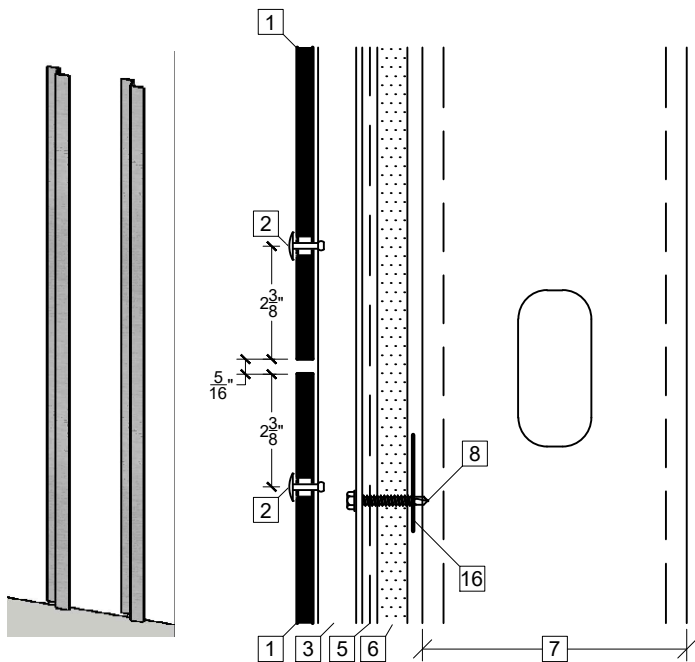
Fastener requirements - The licensed engineer / contractor is to ensure that the fastener spacing is in compliance with local standards and regulations.
Fixed fastener locations shown a "X".

Movement - Each panel shall have a minimum of two fixed fastener locations that are as close to the center of panel as possible, can accommodate one slipping point between the fixed points as shown. The rest shall be gliding fastener locations.

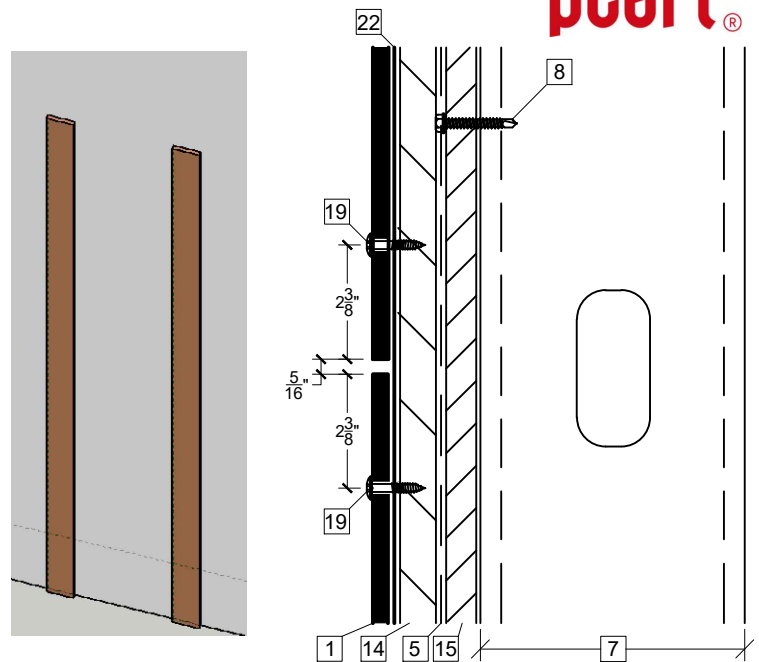
See CURRENT DIM and talk to your local engineer for design layout applications.

Stud Wall system attachment options

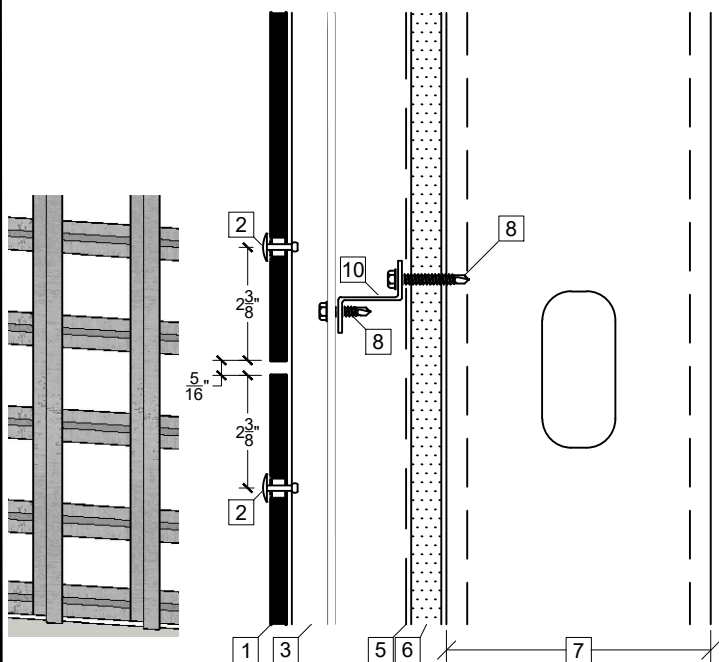
**SWISS
pearl®**



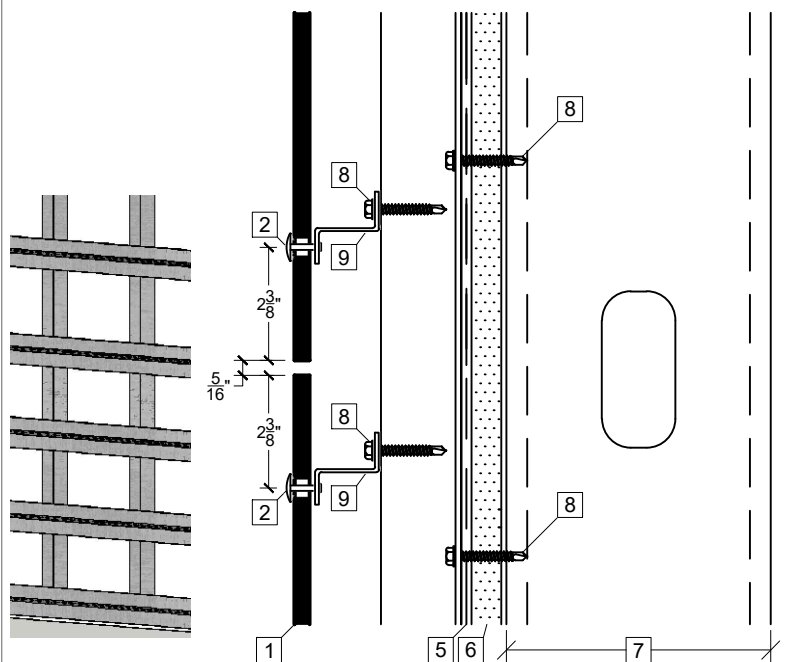
01 - Vertical hat and Z profiles with strapping



02 - Vertical wood battens



03 - Vertical aluminum extrusions with horizontal Z profiles

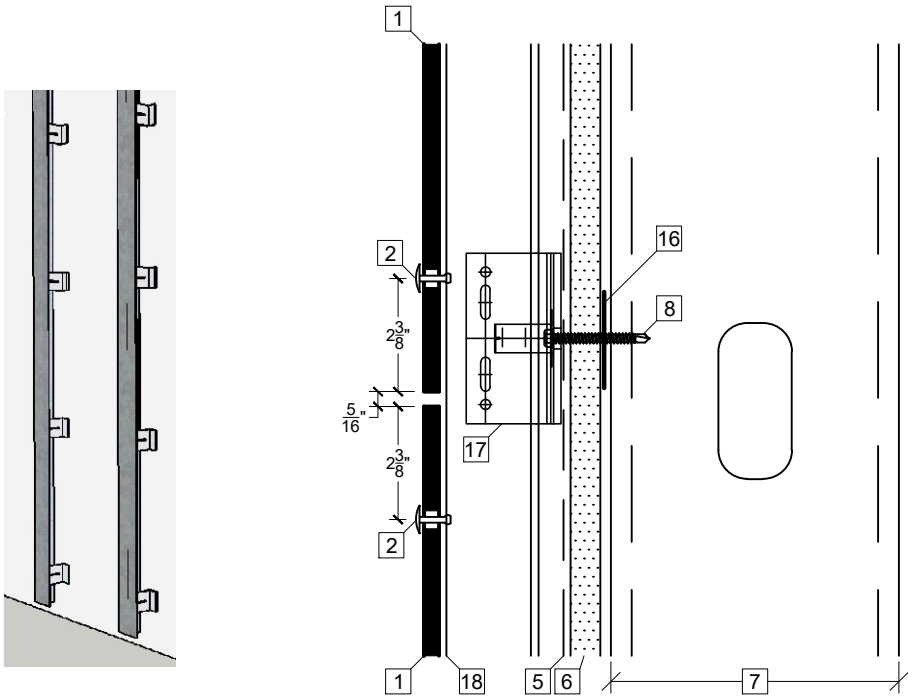


04 - Perforated horizontal profiles with 70% airflow
over horizontal Z profiles

Legend

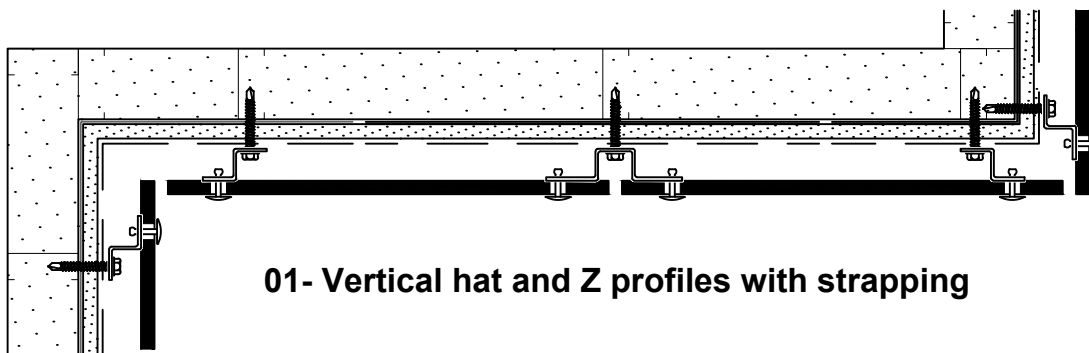
1 Swisspearl panel	6 Densglass - b/o	11 Curtainwall	16 Steel strapping - b/o	21 Parapet Cap
2 Swisspearl rivet	7 Steel stud wall system - b/o	12 Enclosure flashing	17 Vertical bracket	22 EPDM
3 Hat or z profile	8 Fasteners - b/o	13 Sealant and backer rod	18 Vertical T or L support	
4 Insulation	9 Perforated per dim guide	14 Vertical wooden batten	19 Screw by Swisspearl	
5 Weather barrier system -b/o	10 Horizontal support	15 5/8" plywood	20 CMU wall system - b/o	

Stud Wall system attachment options

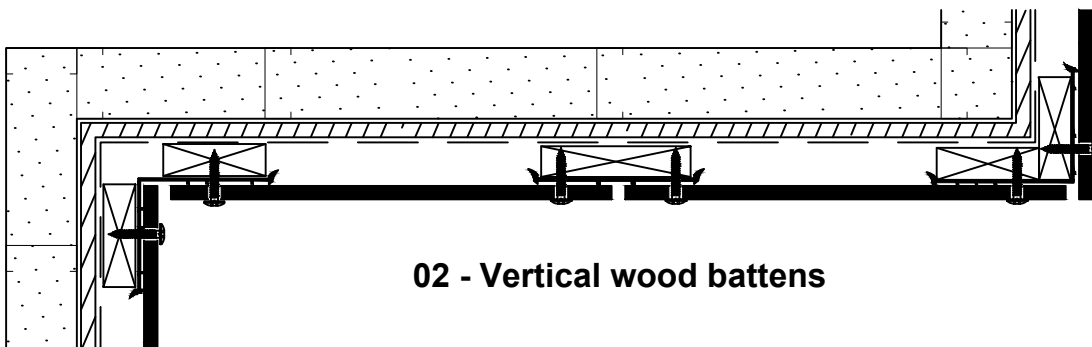


05 - VERTICAL BRACKET AND L PROFILE

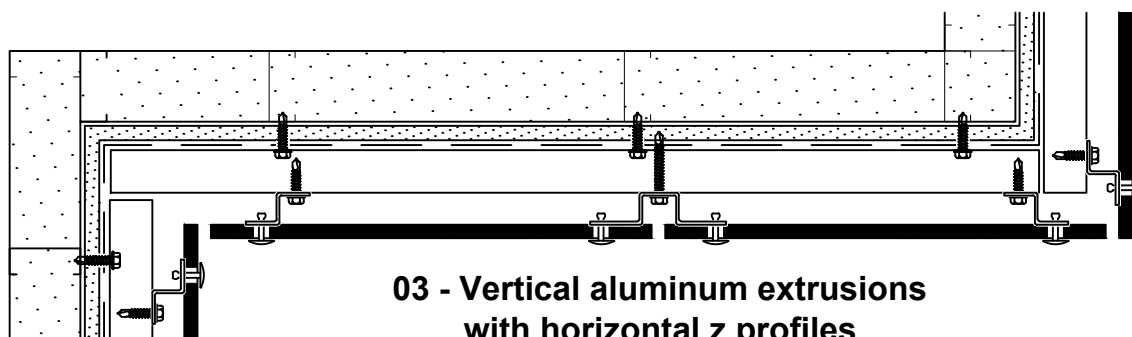
Legend									
1	Swisspearl panel	6	Densglass - b/o	11	Curtainwall	16	Steel strapping - b/o	21	Parapet Cap
2	Swisspearl rivet	7	Steel stud wall system - b/o	12	Enclosure flashing	17	Vertical bracket	22	EPDM
3	Hat or z profile	8	Fasteners - b/o	13	Sealant and backer rod	18	Vertical T or L support		
4	Insulation	9	Perforated per dim guide	14	Vertical wooden batten	19	Screw by Swisspearl		
5	Weather barrier system -b/o	10	Horizontal support	15	5/8" plywood	20	CMU wall system - b/o		



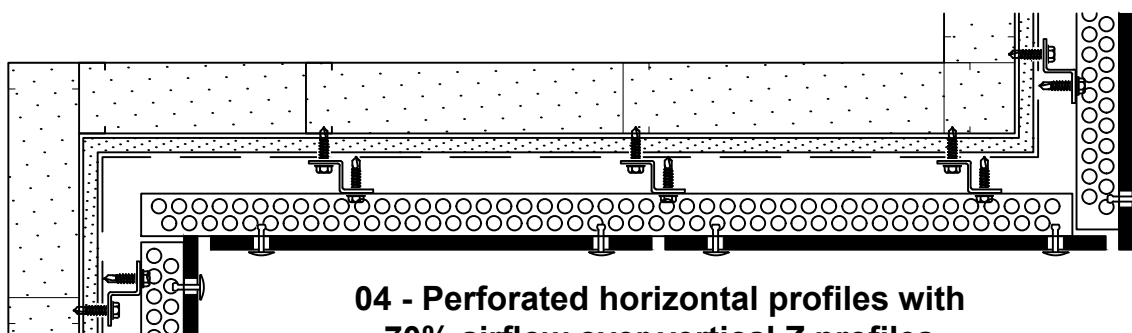
01 - Vertical hat and Z profiles with strapping



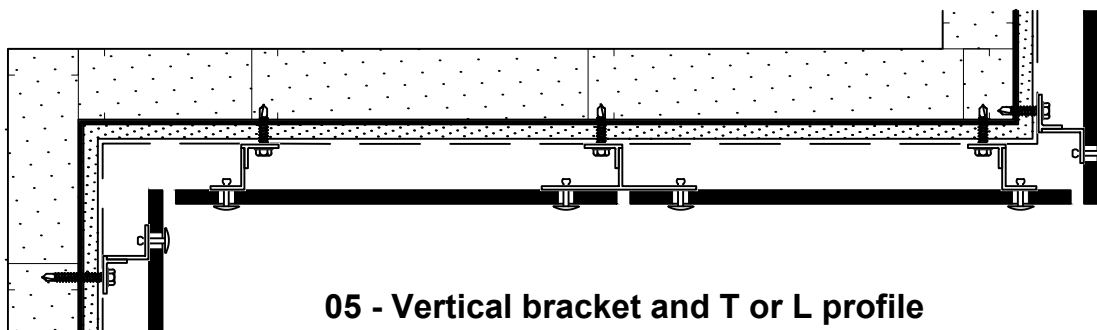
02 - Vertical wood battens



**03 - Vertical aluminum extrusions
with horizontal z profiles**



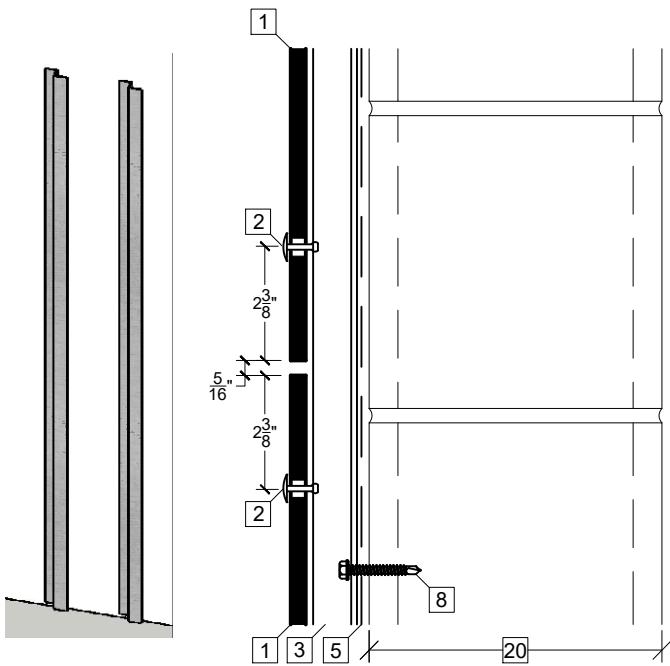
**04 - Perforated horizontal profiles with
70% airflow over vertical Z profiles**



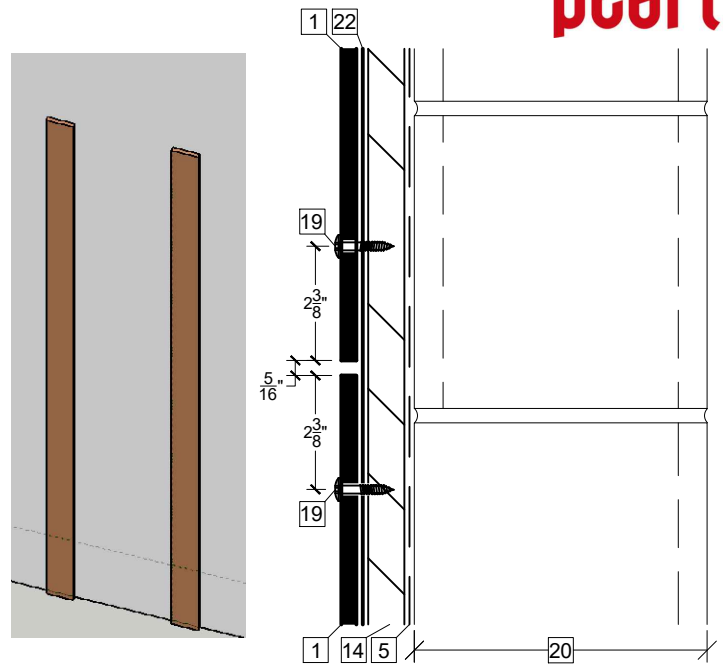
05 - Vertical bracket and T or L profile

CMU Wall system attachment options

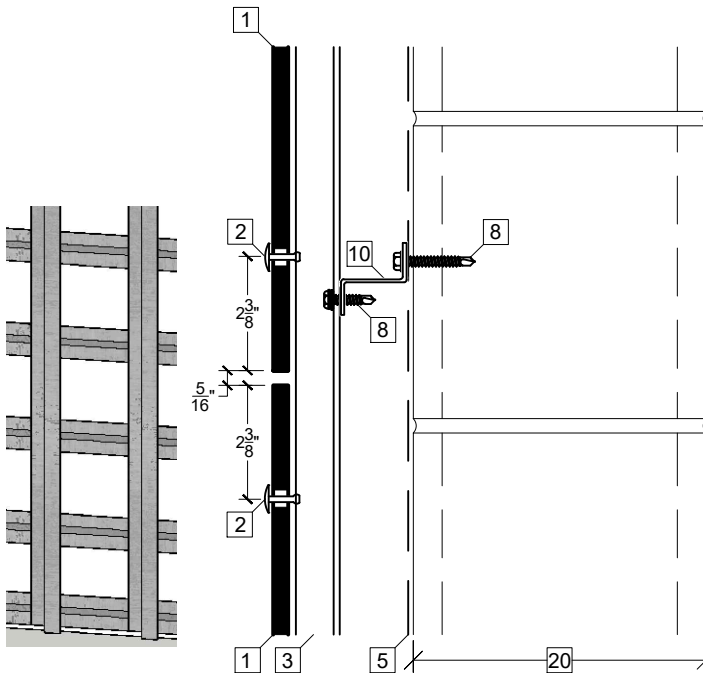
**SWISS
pearl®**



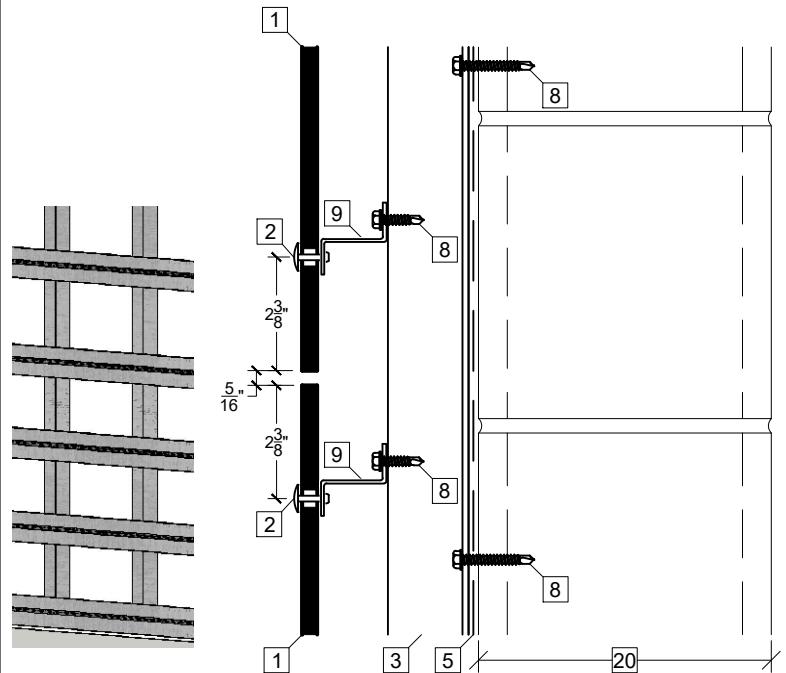
01 - Vertical hat and Z profiles



02 - Vertical wood battens



03 - Vertical aluminum extrusions with horizontal Z profiles

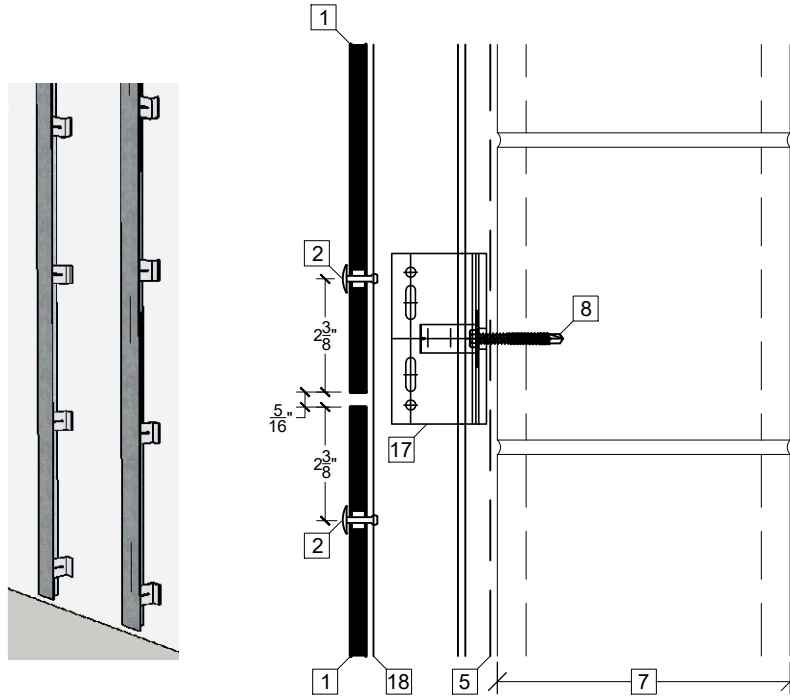


**04 - Perforated horizontal profiles with 70% airflow
over horizontal Z profiles**

Legend

1 Swisspearl panel	6 Densglass - b/o	11 Curtainwall - b/o	16 Steel strapping - b/o	21 Parapet cap - b/o
2 Swisspearl rivet	7 Steel stud wall system - b/o	12 Enclosure flashing	17 Vertical bracket	22 EPDM
3 Hat or z profile	8 Fasteners - b/o	13 Sealant and backer rod - b/o	18 Vertical T or L support	
4 Insulation - b/o	9 Perforated per dim guide	14 Vertical wooden batten	19 Screw by Swisspearl	
5 Weather barrier system - b/o	10 Horizontal support	15 5/8" plywood - b/o	20 CMU wall system - b/o	

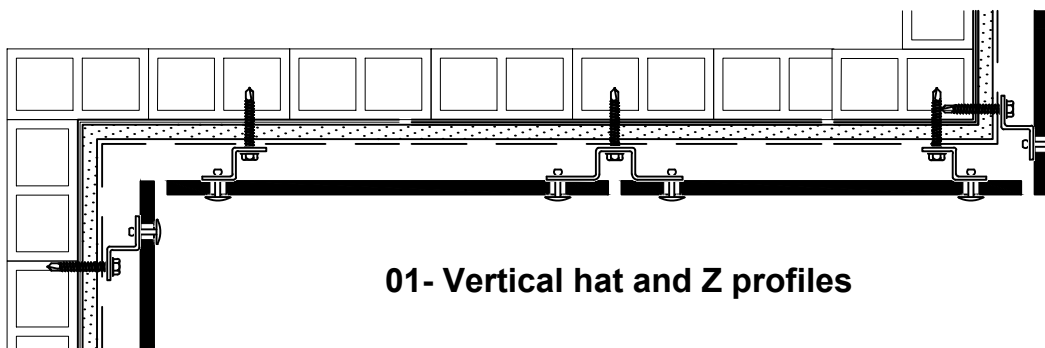
CMU Wall system attachment options



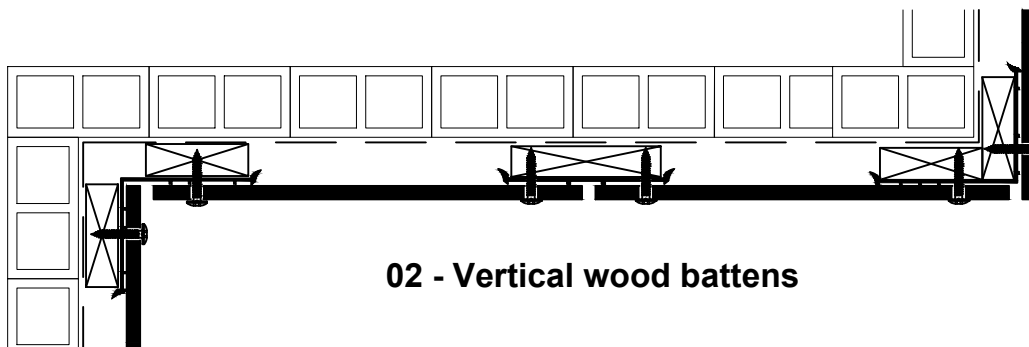
05 - Vertical bracket T and L profile

Legend

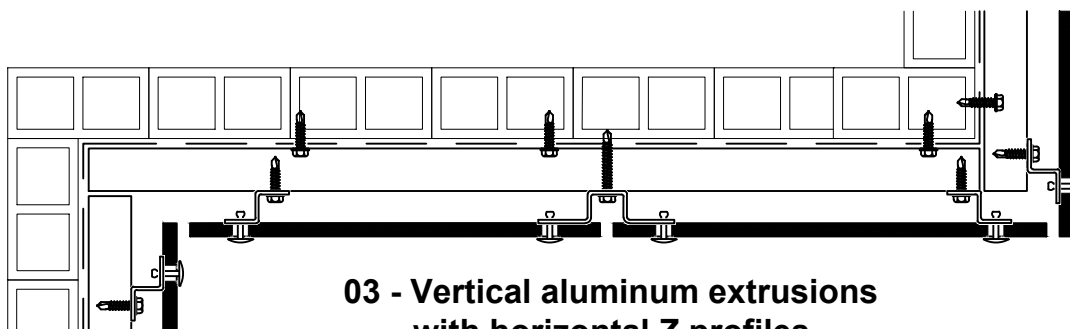
1 Swisspearl panel	6 Densglass - b/o	11 Curtainwall - b/o	16 Steel strapping - b/o	21 Parapet cap - b/o
2 Swisspearl rivet	7 Steel stud wall system - b/o	12 Enclosure flashing	17 Vertical bracket	22 EPDM
3 Hat or z profile	8 Fasteners - b/o	13 Sealant and backer rod - b/o	18 Vertical T or L support	
4 Insulation - b/o	9 Perforated per dim guide	14 Vertical wooden batten	19 Screw by Swisspearl	
5 Weather barrier system - b/o	10 Horizontal support	15 5/8" plywood - b/o	20 CMU wall system - b/o	



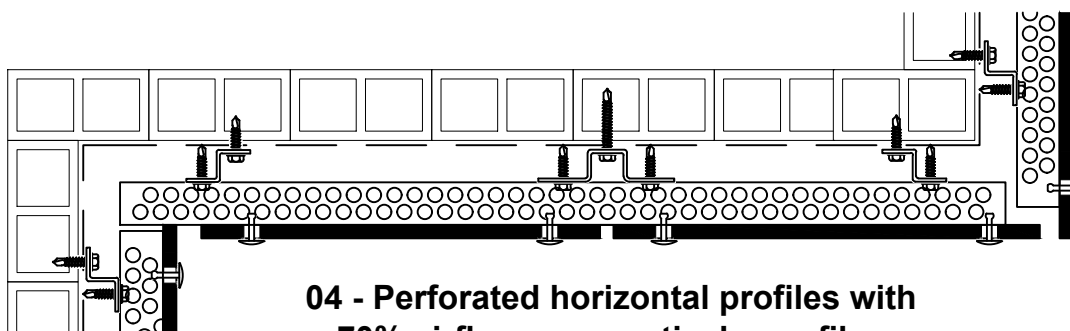
01 - Vertical hat and Z profiles



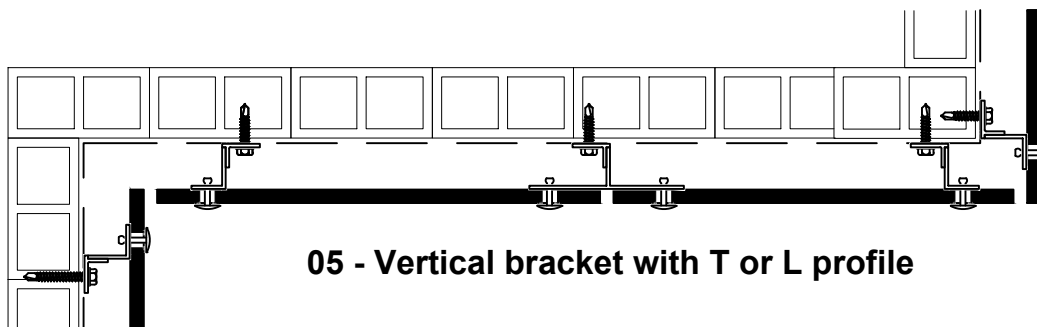
02 - Vertical wood battens



**03 - Vertical aluminum extrusions
with horizontal Z profiles**



**04 - Perforated horizontal profiles with
70% airflow over vertical z profiles**

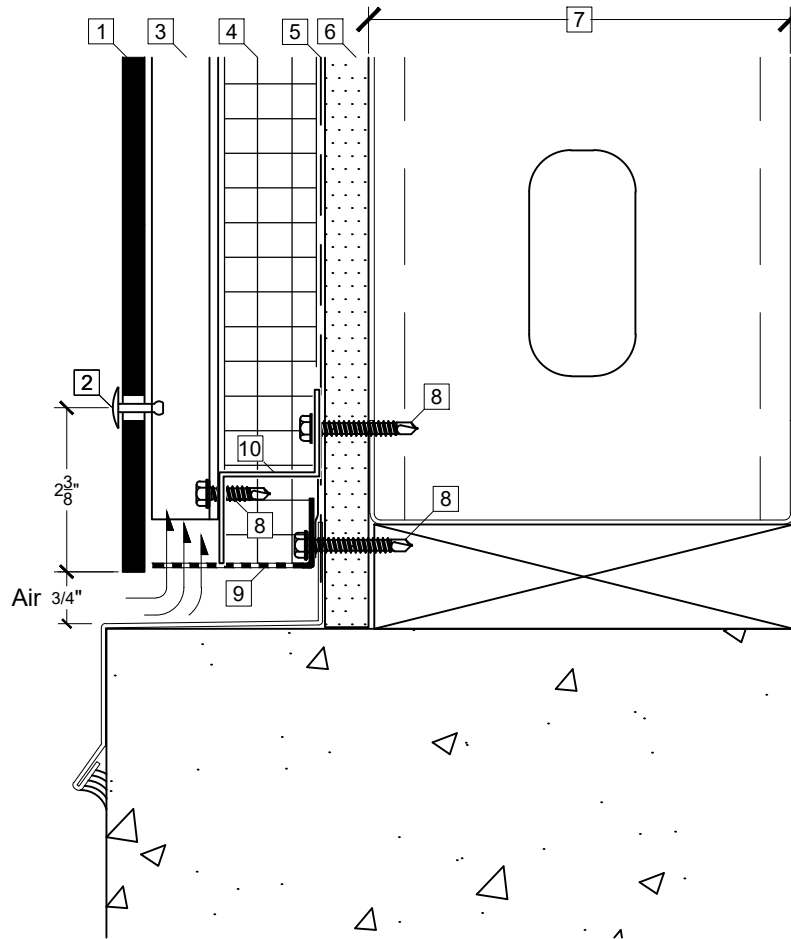


05 - Vertical bracket with T or L profile

Panel system
Base stand-off detail

SWISS
pearl®

See **Dim Guide** for rivet
spacing at panel perimeter



Not all call-outs may be in use.

See **Current Dim** and talk to your local engineer for design layout applications.

Detail not to scale.

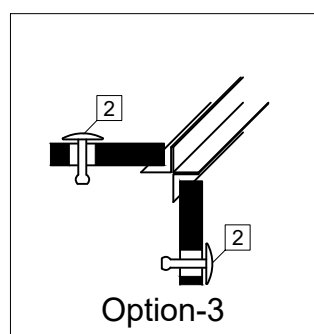
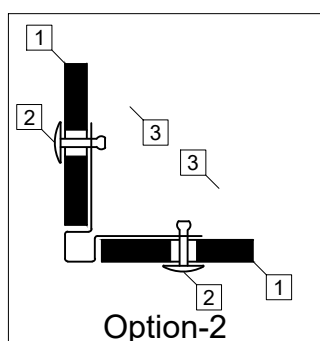
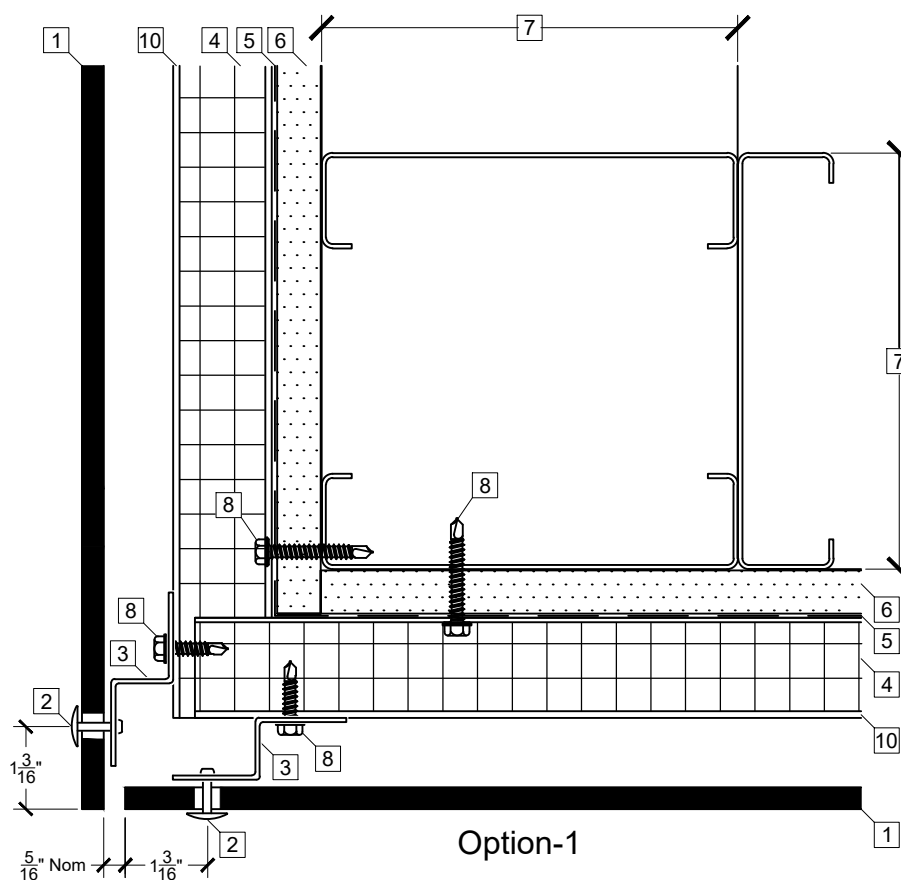
A

Legend

1 Swisspearl panel	6 Densglass - b/o	11 Curtainwall - b/o	16 Steel strapping - b/o	21 Parapet cap - b/o
2 Swisspearl rivet	7 Steel stud wall system - b/o	12 Enclosure flashing - b/o	17 Vertical bracket	22 EPDM
3 Hat or Z profile	8 Fasteners - b/o	13 Sealant and backer rod - b/o	18 Vertical T or L support	
4 Insulation - b/o	9 Perforated per dim guide req.	14 Vertical wooden batten	19 Screw by Swisspearl	
5 Weather barrier system - b/o	10 Horizontal support	15 5/8" Plywood - b/o	20 CMU wall system - b/o	

Panel system Outside corner detail

**SWISS
pearl®**



Not all call-outs may be in use.

See **Current Dim** and talk to your local engineer for design layout applications.

Detail not to scale.

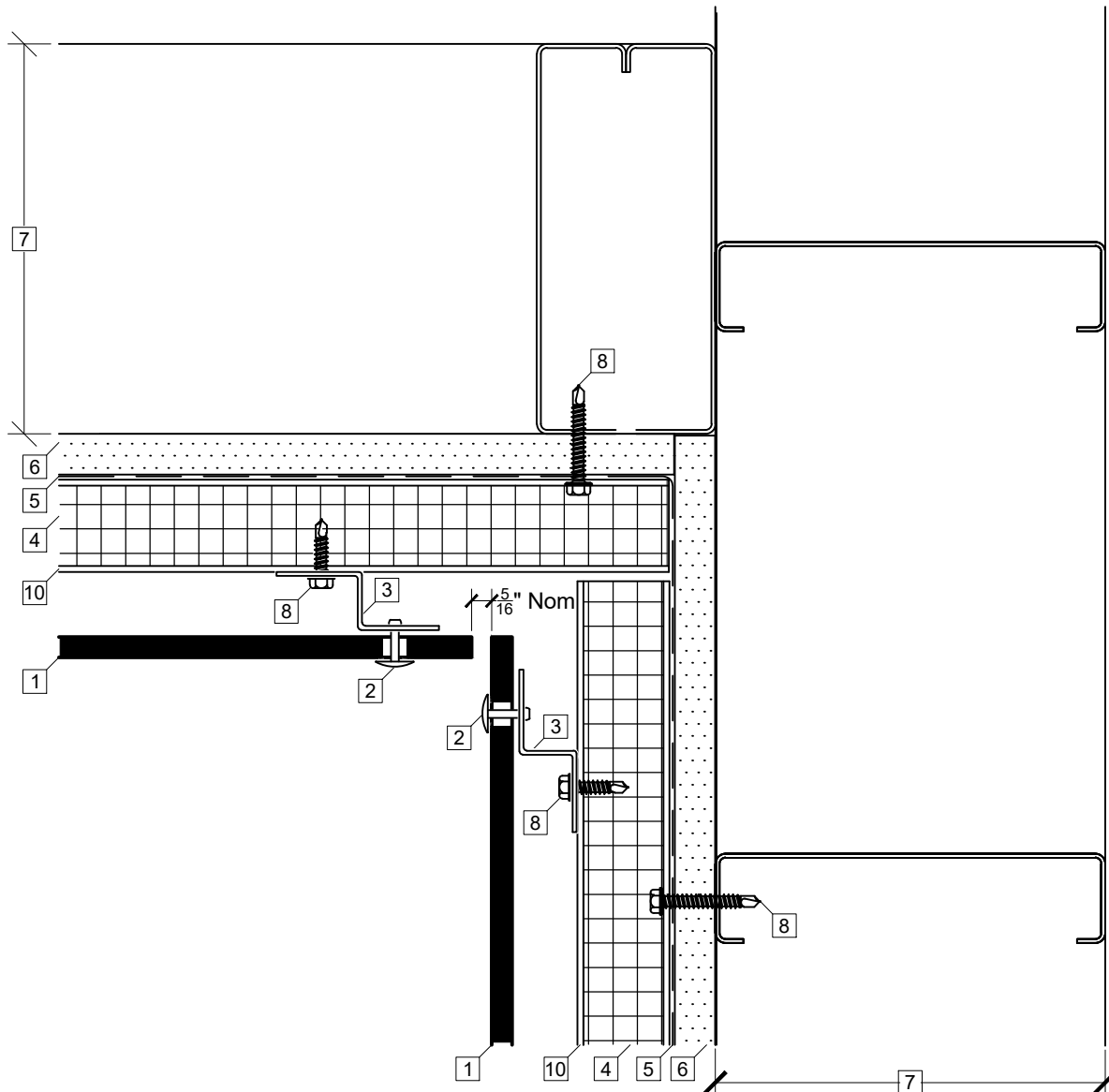
B

Legend

1 Swisspearl panel	6 Densglass - b/o	11 Curtainwall - b/o	16 Steel strapping - b/o	21 Parapet cap - b/o
2 Swisspearl rivet	7 Steel stud wall system - b/o	12 Enclosure flashing - b/o	17 Vertical bracket	22 EPDM
3 Hat or Z profile	8 Fasteners - b/o	13 Sealant and backer rod - b/o	18 Vertical T or L support	
4 Insulation - b/o	9 Perforated per dim guide req.	14 Vertical wooden batten	19 Screw by Swisspearl	
5 Weather barrier system - b/o	10 Horizontal support	15 5/8" Plywood - b/o	20 CMU wall system - b/o	

Panel system Inner corner detail

**SWISS
pearl®**



Not all call-outs may be in use.

See **Current Dim** and talk to your local engineer for design layout applications.

Detail not to scale.

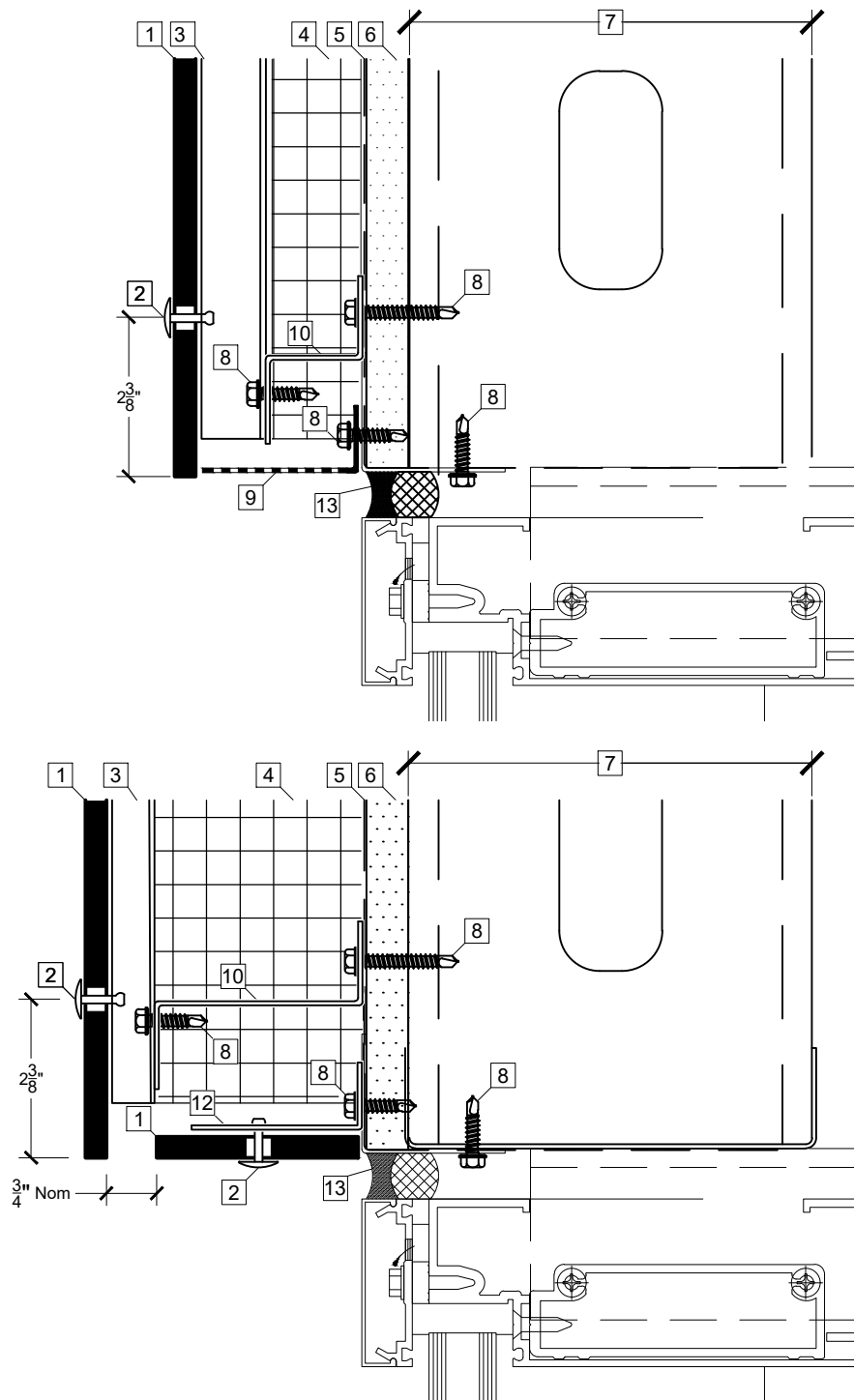
C

Legend

1 Swisspearl panel	6 Densglass - b/o	11 Curtainwall - b/o	16 Steel strapping - b/o	21 Parapet cap - b/o
2 Swisspearl rivet	7 Steel stud wall system - b/o	12 Enclosure flashing - b/o	17 Vertical bracket	22 EPDM
3 Hat or Z profile	8 Fasteners - b/o	13 Sealant and backer rod - b/o	18 Vertical T or L support	
4 Insulation - b/o	9 Perforated per dim guide req.	14 Vertical wooden batten	19 Screw by Swisspearl	
5 Weather barrier system - b/o	10 Horizontal support	15 5/8" Plywood - b/o	20 CMU wall system - b/o	

Panel system
Door / window head detail

SWISS
pearl®



Not all call-outs may be in use.

See **Current Dim** and talk to your local engineer for design layout applications.

Detail not to scale.

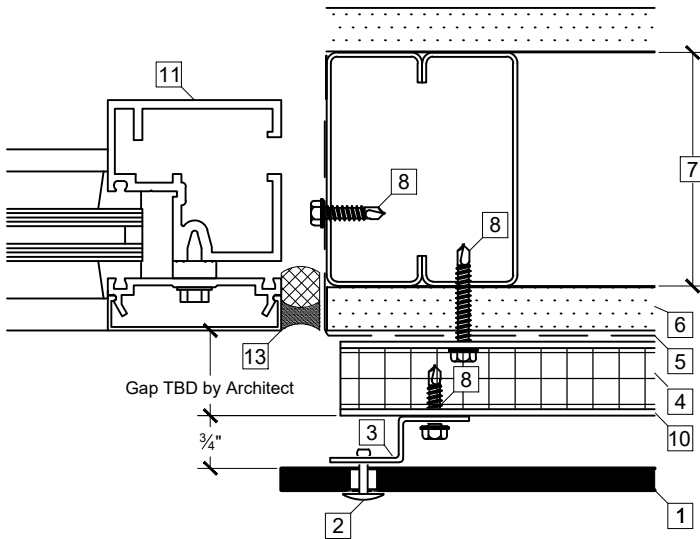
D

Legend

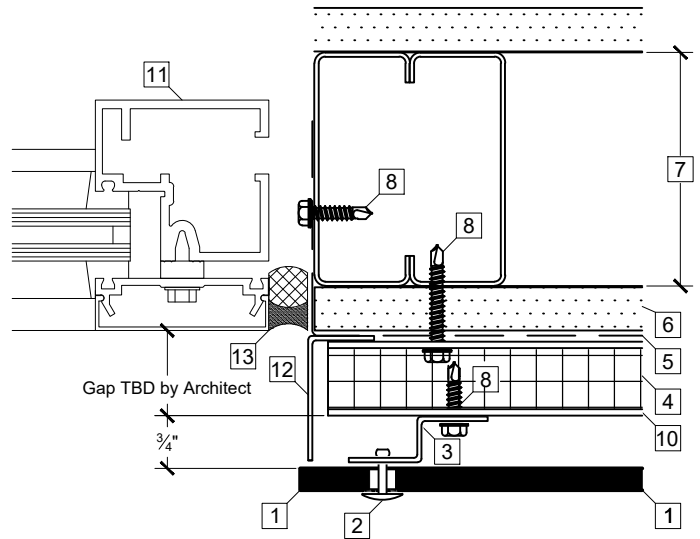
1 Swisspearl panel	6 Densglass - b/o	11 Curtainwall - b/o	16 Steel strapping - b/o	21 Parapet cap - b/o
2 Swisspearl rivet	7 Steel stud wall system - b/o	12 Enclosure flashing - b/o	17 Vertical bracket	22 EPDM
3 Hat or Z profile	8 Fasteners - b/o	13 Sealant and backer rod - b/o	18 Vertical T or L support	
4 Insulation - b/o	9 Perforated per dim guide req.	14 Vertical wooden batten	19 Screw by Swisspearl	
5 Weather barrier system - b/o	10 Horizontal support	15 5/8" Plywood - b/o	20 CMU wall system - b/o	

Panel system
Door - window jamb detail

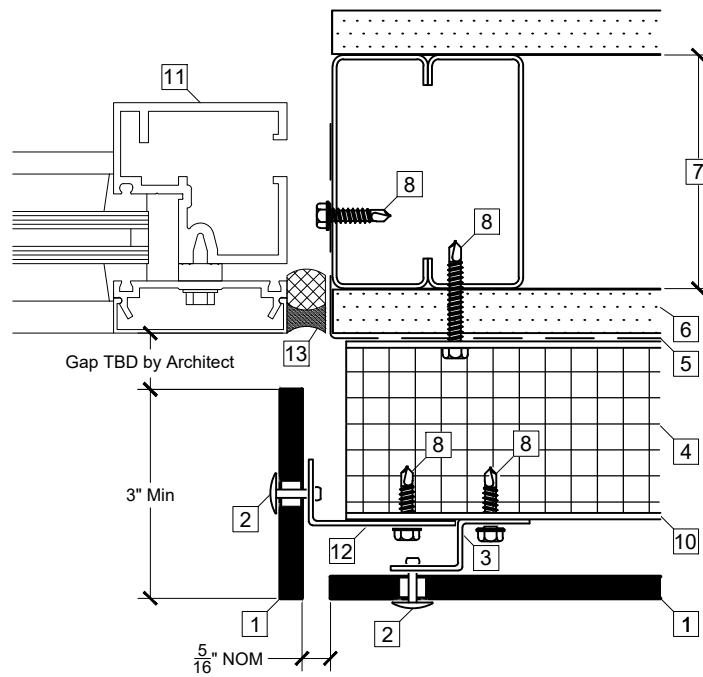
**SWISS
pearl®**



Option-1



Option-2



Option-3

Not all call-outs may be in use.

See **Current Dim** and talk to your local engineer for design layout applications.

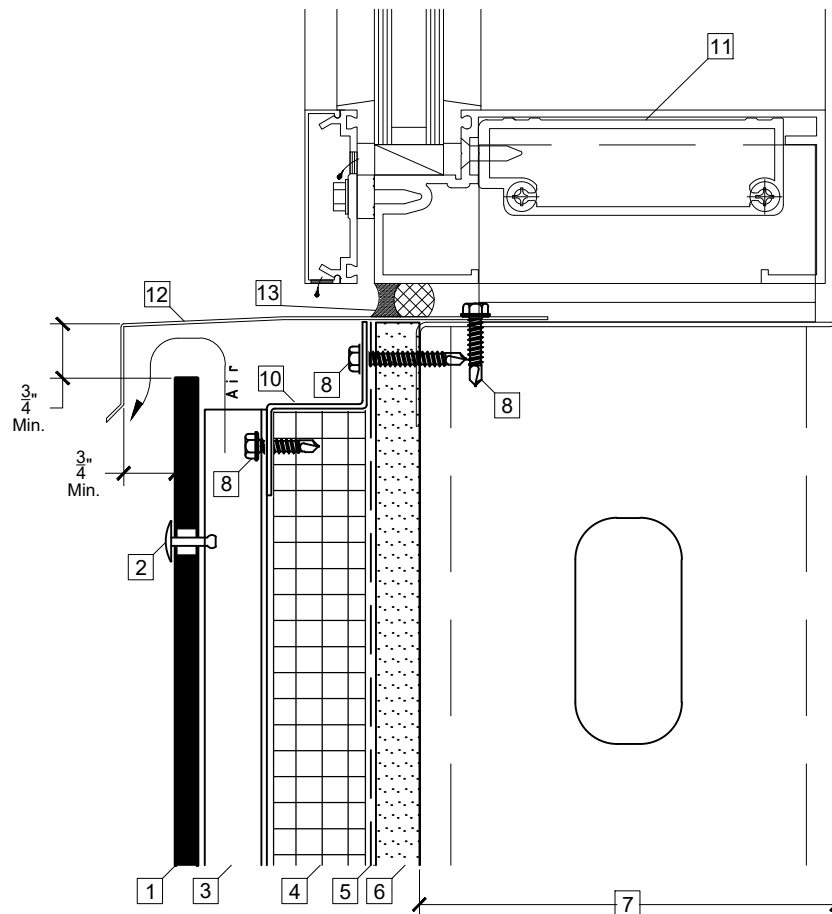
Detail not to scale.

E

Legend

1 Swisspearl panel	6 Densglass - b/o	11 Curtainwall - b/o	16 Steel strapping - b/o	21 Parapet cap - b/o
2 Swisspearl rivet	7 Steel stud wall system - b/o	12 Enclosure flashing - b/o	17 Vertical bracket	22 EPDM
3 Hat or Z profile	8 Fasteners - b/o	13 Sealant and backer rod - b/o	18 Vertical T or L support	
4 Insulation - b/o	9 Perforated per dim guide req.	14 Vertical wooden batten	19 Screw by Swisspearl	
5 Weather barrier system - b/o	10 Horizontal support	15 5/8" Plywood - b/o	20 CMU wall system - b/o	

Panel system Window sill detail



Not all call-outs may be in use.

See **Current Dim** and talk to your local engineer for design layout applications.

Detail not to scale.

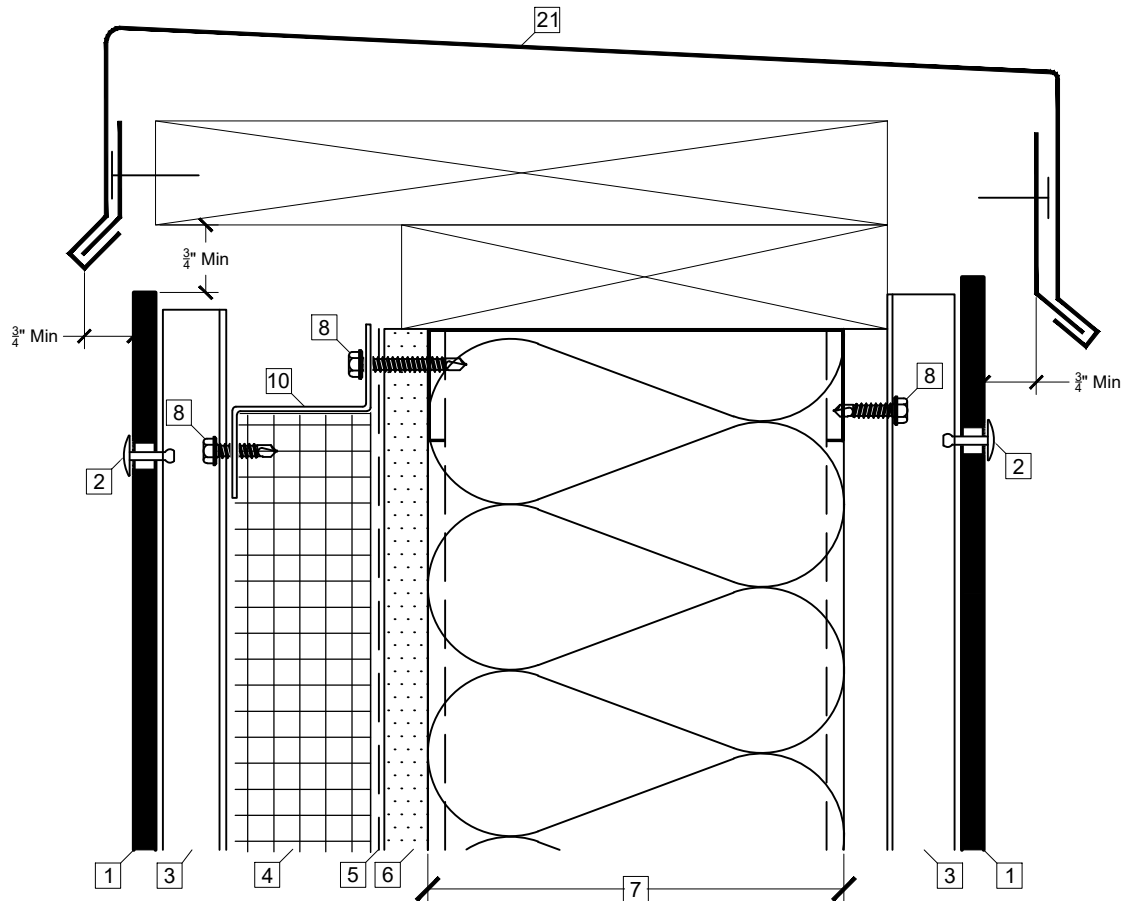
F

Legend

1 Swisspearl panel	6 Densglass - b/o	11 Curtainwall - b/o	16 Steel strapping - b/o	21 Parapet cap - b/o
2 Swisspearl rivet	7 Steel stud wall system - b/o	12 Enclosure flashing - b/o	17 Vertical bracket	22 EPDM
3 Hat or Z profile	8 Fasteners - b/o	13 Sealant and backer rod - b/o	18 Vertical T or L support	
4 Insulation - b/o	9 Perforated per dim guide req.	14 Vertical wooden batten	19 Screw by Swisspearl	
5 Weather barrier system - b/o	10 Horizontal support	15 5/8" Plywood - b/o	20 CMU wall system - b/o	

Panel system
Parapet/ coping detail

SWISS
pearl®



Not all call-outs may be in use.

See **Current Dim** and talk to your local engineer for design layout applications.

Detail not to scale.

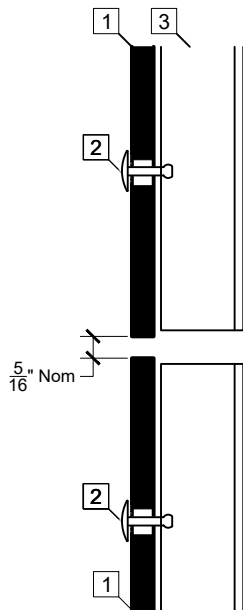
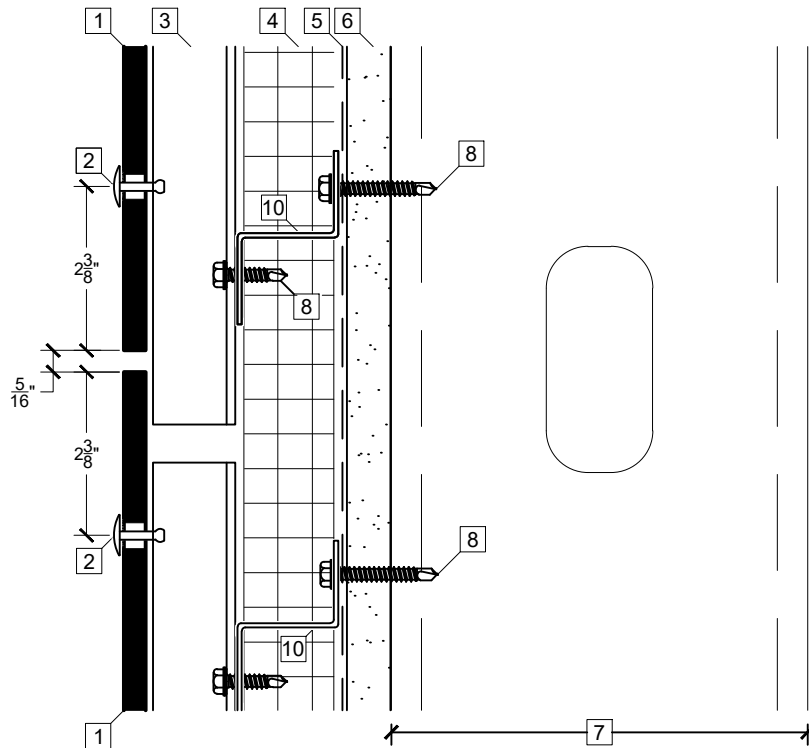
G

Legend

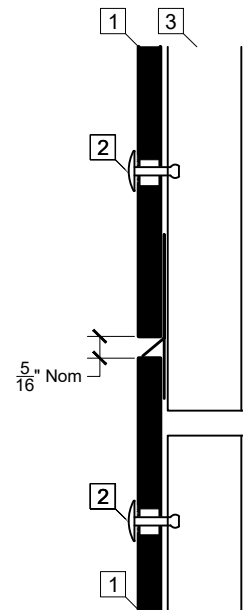
1 Swisspearl panel	6 Densglass - b/o	11 Curtainwall - b/o	16 Steel strapping - b/o	21 Parapet cap - b/o
2 Swisspearl rivet	7 Steel stud wall system - b/o	12 Enclosure flashing - b/o	17 Vertical bracket	22 EPDM
3 Hat or Z profile	8 Fasteners - b/o	13 Sealant and backer rod - b/o	18 Vertical T or L support	
4 Insulation - b/o	9 Perforated per dim guide req.	14 Vertical wooden batten	19 Screw by Swisspearl	
5 Weather barrier system - b/o	10 Horizontal support	15 5/8" Plywood - b/o	20 CMU wall system - b/o	

Panel system Field horizontal reveal detail

**SWISS
pearl®**



Option-1
Breaks of verticals to coincide with horizontal panel joints.



Option-2
Flashing is clamped (not fastened)

Not all call-outs may be in use.

See **Current Dim** and talk to your local engineer for design layout applications.

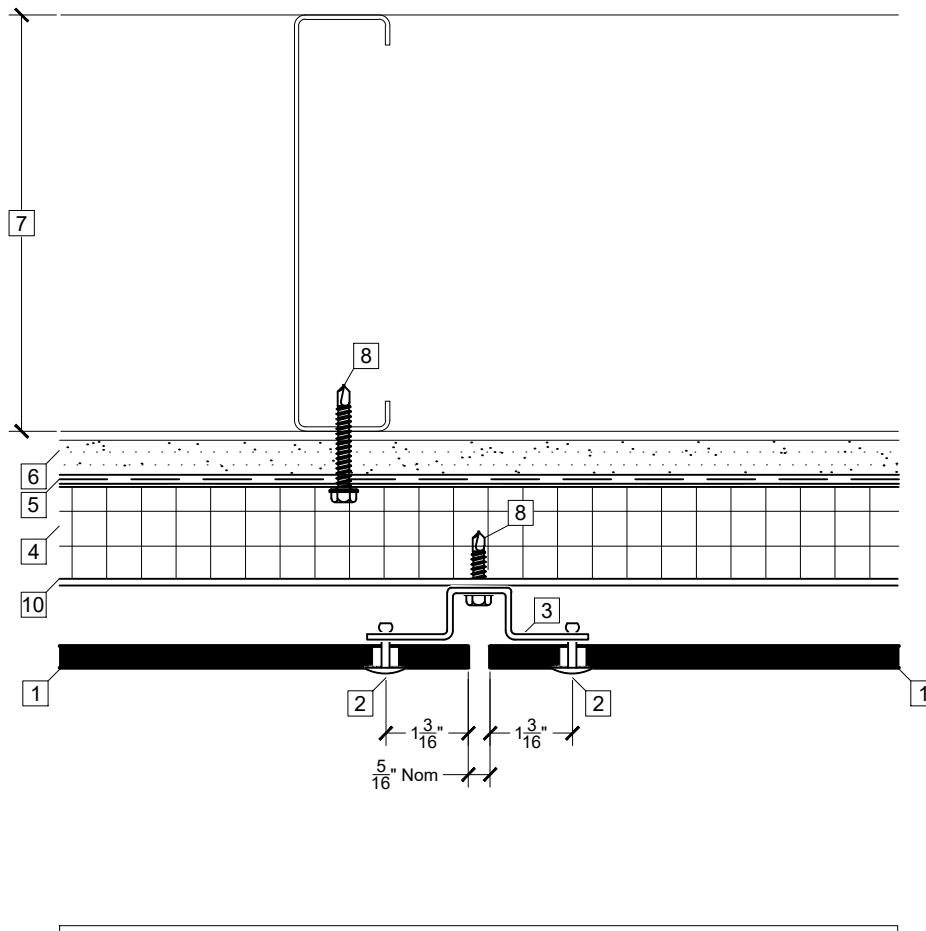
Detail not to scale.

H

Legend

1 Swisspearl panel	6 Densglass - b/o	11 Curtainwall - b/o	16 Steel strapping - b/o	21 Parapet cap - b/o
2 Swisspearl rivet	7 Steel stud wall system - b/o	12 Enclosure flashing - b/o	17 Vertical bracket	22 EPDM
3 Hat or Z profile	8 Fasteners - b/o	13 Sealant and backer rod - b/o	18 Vertical T or L support	
4 Insulation - b/o	9 Perforated per dim guide req.	14 Vertical wooden batten	19 Screw by Swisspearl	
5 Weather barrier system - b/o	10 Horizontal support	15 5/8" Plywood - b/o	20 CMU wall system - b/o	

Panel system Field vertical reveal detail



Not all call-outs may be in use.

See **Current Dim** and talk to your local engineer for design layout applications.

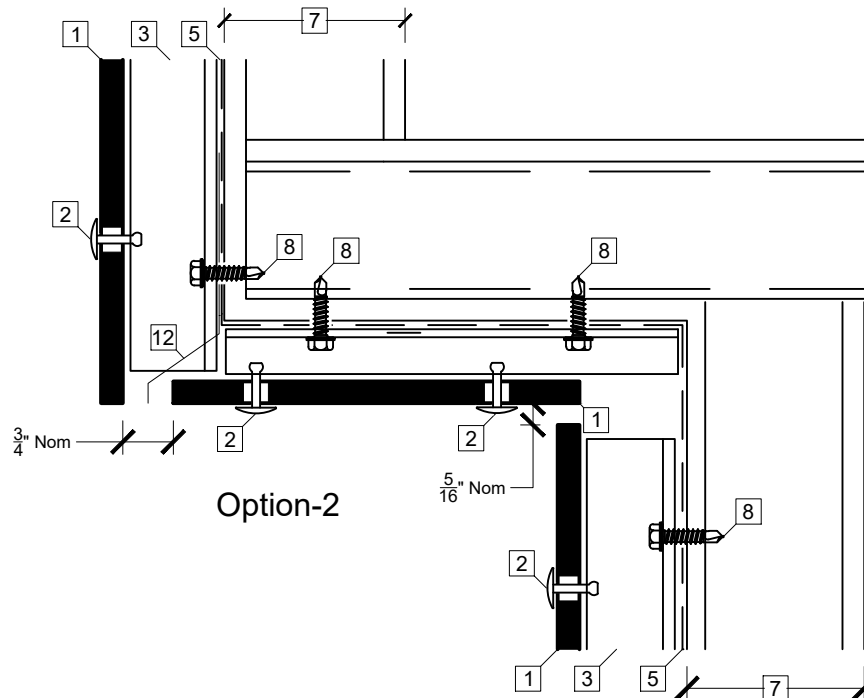
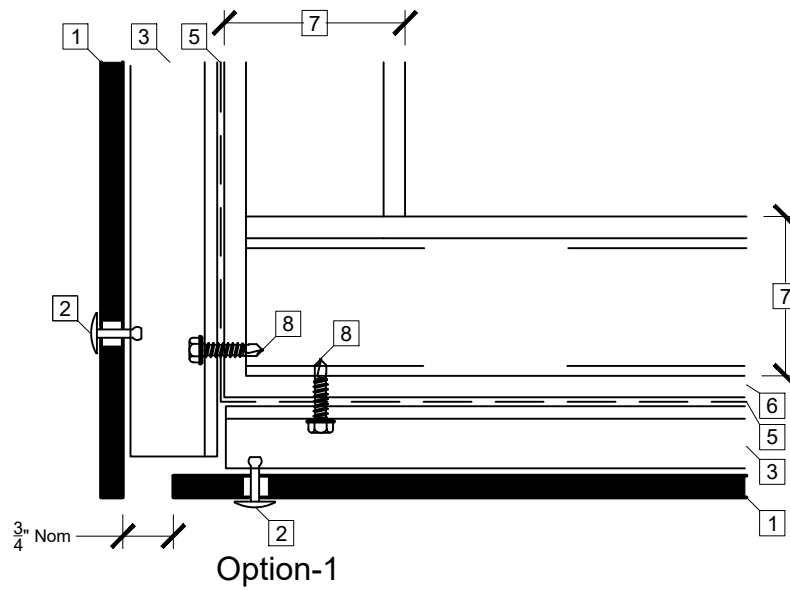
Detail not to scale.

Legend

1 Swisspearl panel	6 Densglass - b/o	11 Curtainwall - b/o	16 Steel strapping - b/o	21 Parapet cap - b/o
2 Swisspearl rivet	7 Steel stud wall system - b/o	12 Enclosure flashing - b/o	17 Vertical bracket	22 EPDM
3 Hat or Z profile	8 Fasteners - b/o	13 Sealant and backer rod - b/o	18 Vertical T or L support	
4 Insulation - b/o	9 Perforated per dim guide req.	14 Vertical wooden batten	19 Screw by Swisspearl	
5 Weather barrier system - b/o	10 Horizontal support	15 5/8" Plywood - b/o	20 CMU wall system - b/o	

Panel system Soffit detail

**SWISS
pearl®**



Not all call-outs may be in use.

See **Current Dim** and talk to your local engineer for design layout applications.

Detail not to scale.

J

Legend

1 Swisspearl panel	6 Densglass - b/o	11 Curtainwall - b/o	16 Steel strapping - b/o	21 Parapet cap - b/o
2 Swisspearl rivet	7 Steel stud wall system - b/o	12 Enclosure flashing - b/o	17 Vertical bracket	22 EPDM
3 Hat or Z profile	8 Fasteners - b/o	13 Sealant and backer rod - b/o	18 Vertical T or L support	
4 Insulation - b/o	9 Perforated per dim guide req.	14 Vertical wooden batten	19 Screw by Swisspearl	
5 Weather barrier system - b/o	10 Horizontal support	15 5/8" Plywood - b/o	20 CMU wall system - b/o	